



## Goldpress 4+



User's guide

**GB**

Bedienungshandbuch

**DE**

Guide de l'utilisateur

**FR**

Manuale di istruzioni

**ITA**

Handleiding

**NL**

Instrukcja obsługi

**PL**

## Contents:

- 1 General information
- 2 Description
- 3 Safety instructions
- 4 Transport and storage
- 5 Installation
- 6 Preparation to work
- 7 Setting the temperature and stamping time
- 8 Counter
- 9 Preparing the fonts and matrixes
  - A. Preparing the fonts
  - B. Preparing the matrix
- 10 Preparing the document for hot stamping
- 11 Preparing the plates
- 12 Preparing the channel for hot stamping
- 13 Hot stamping
- 14 Maintenance
- 15 Technical Data

## 1 GENERAL INFORMATION

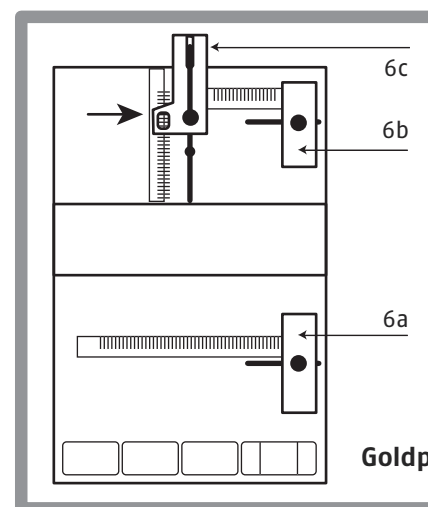
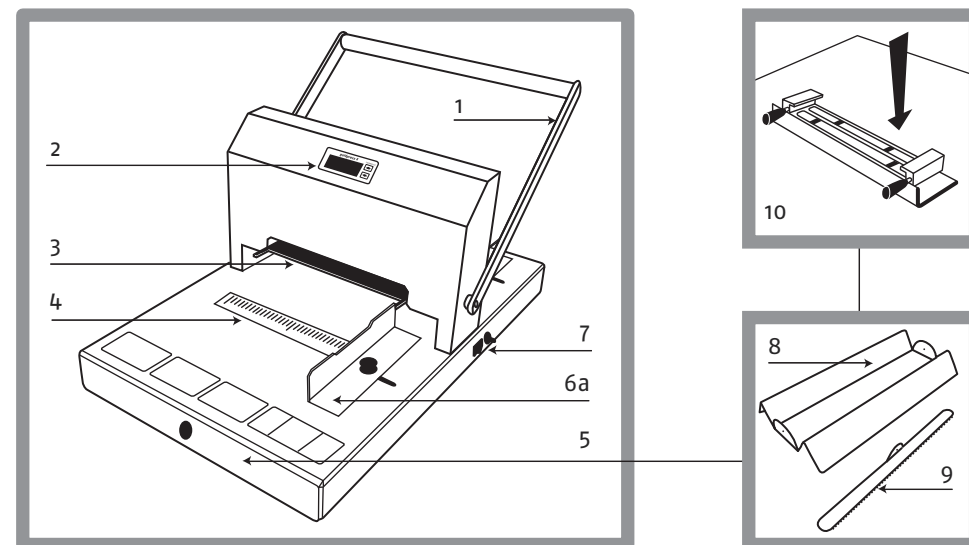
The GoldPress machine was designed to make hot stampings on paper or cardboard covers, as well as on covers coated with glued paper sheets. It is also possible to make hot stamps on plastic or plastic coated materials, however the tests should be carried out previously to check if the material is suitable for the purpose. The use of fonts makes it possible to compose any inscription (various kinds of fonts, also in various languages and sizes, are available) and to apply it on a cover or another surface. It is also possible to prepare a special matrix (e.g. a logo) consistent with the GOLDCOVER standard. Also, thanks to an O.Goldchannel Base device, the imprints on channels (backs of OPUS covers) can be made, while an O.CD cover Base GP allows to hot print on Cdcovers – CD/DVD cases.

The detailed information concerning extension of the possibilities of the machine can be obtained from the supplier.

Operation of the machine does not need special qualifications, however:  
**Before starting the work the operator should read the manual carefully.**

The GoldPress is built on the basis of an eccentric press. It is fitted with a heater (enabling to make hot stamps) and a microprocessor controller with a digital display to maintain precisely a set temperature and stamping time, which ensures constant work conditions. A frame with a matrix or fonts that form an inscription is mounted on the heater. Guides and a front scale make it possible to position a cover in relation to the central point of the frame. A movable cutter enables to cut off a required piece of hot stamping foil. A special container to store the fonts in order (O.Font Container) is also available as an option.

## 2 DESCRIPTION



- 1 – arm
- 2 – LCD display
- 3 – heater + frame
- 4 – scale
- 5 – drawer
- 6 – a. side guide 1  
b. side guide 2  
c. back guide
- 7 – main switch
- 8 – foil container
- 9 – foil cutter
- 10 – holder to support the frame

### 3 SAFETY INSTRUCTIONS

- Before putting the machine into operation please read the safety precautions, manufacturer recommendations and the operation manual. The operation manual should be easily available at any time for the operator.
- The machine should be installed on sturdy and level floor.
- The machine should be protected against dust and moisture.
- The machine must not be placed near the heating units or ventilation units.
- The machine should not be used in vicinity of inflammable liquids or gases.
- The machine may be power supplied only through the original cord. A mains socket should be provided with an efficient earthing. The supply voltage should be consistent with the parameters specified on the technical plate located on the machine housing. If this principle is not obeyed, then electric shock and fire may occur.
- The supplying cable should be protected against any damage, must not be used to pull the machine or to remove the plug from a socket.
- Making any changes to the electric installation of the machine or in the supplying cable causes the hazard of electric shock.
- The machine is turned off completely after removing the plug from a socket.
- During a long standstill or before replacing the machine, the plug should be removed from a mains socket.
- Before removing the housing from the machine, remove the plug from a socket necessarily.
- The power pack module is installed in the machine base and provided with a mains fuse (access from the bottom of the machine). If replacement of the fuse is necessary, this should be effected by a suitably qualified person.
- Do not touch the heater – burn hazard.
- Before replacement of fonts fixed in the frame, wait 5÷10 min to make sure that the elements are cool – burn hazard.
- The machine includes a sharp device (knife to cut off the foil) – pay special attention when using the device or operating nearby.
- The machine should be kept away from children reach.
- The machine must not be used for any other purposes than those indicated in the operating manual
- It is necessary to check if the machine operates correctly. In case of any malfunctions, contacting the servicing point is required
- The machine must not be located outside, should be operated in room temperature higher than +8C/46,4 F.
- The machine should be operated according to general safety rules.
- Any repairs can be made only by trained staff.

### 4 TRANSPORT AND STORAGE

- The GoldPress is an office device electrically supplied and adapted to operation in office conditions. Both the machine and its package should not be exposed to moisture (e.g. rain).
- **If moistened or flooded with water, the machine should be delivered to a servicing point to carry out an inspection, in order to avoid a risk of electric shock.**
- The machine should be stored in plus Celsius temperatures (above 32F)
- Although the package protects the machine, it should be handled with care.

### 5 INSTALLATION

- The machine does not need disassembling of transport protections.
- It is recommended to store the package in case of repeated transportation
- The GoldPress is a machine adapted to operating in office conditions.
- The machine does not work if the room temperature is lower than +8 C/46,4 F
- The machine should be positioned on a suitably tough, flat and stable surface.
- The rubber legs of the machine protect the substrate against being scratched and do not leave any traces.
- If the machine was exposed to minus Celsius temperatures (below 32F), it may be connected to mains after several dozens of minutes due to condensation of steam on cold metal elements.
- **To ensure operator's safety, the machine may be supplied only through the original cord. A mains socket should be provided with efficient earthing. The supply voltage must be consistent with the parameters specified on the technical plate positioned on the machine housing. Disobeying the above rule may result in electric shock or fire.**

### 6 PREPARATION TO WORK

#### Note!

**Make sure the temperature of the room where the machine is placed exceeds +8 C/46,4 F. If it does not, the machine will not work.**

1. Switch the power supply on (the main switch is located on the right side of the machine)
  - On the display the following will appear:
    - control inscription "OPUS"
    - set heater temperature (e.g. 100 C or 212F – if the temperature is set in Fahrenheit degrees)
    - set stamping time (e.g. 001,5 – means: 1,5 second)
    - current heater temperature

If the current heater temperature differs from the set one for more than +/- 3 degrees, the figures (which indicate the current heater temp.) blink slowly and change (aiming to the value of set temperature). Blinking stops when the current heater temperature reaches the set temperature (including +/- 3 degrees deviation).

#### Note!

**The temperature can be measured both in Celsius and Fahrenheit scales. To change the scale from Celsius into Fahrenheit, press (with the machine switched off) the "↓" button (downward arrow) and switch on the machine at the same time. Keep pressing the button for c.a. 4 seconds until you see the inscription "St F" on the display (means that the scale has been changed). When changing the scale from Fahrenheit into Celsius, do the similar pressing the "↑" button (upward arrow), until the inscription "St C" appears on the display.**

2. Wait until the current heater temperature reaches the set temperature and the figures on the display stop blinking.
3. The machine is ready to work.

## 7 SETTING THE TEMPERATURE AND STAMPING TIME

- The best results for hot stamping when using Opus supplies (hot stamping foil and covers) are obtained with the following settings:
- set heater temperature : 100 C/212 F
- set stamping time : 1,5-2 seconds

However, if the stamping results are not satisfactory, a change in the settings may be necessary.

To set the heater temperature, move the arm maximally up. To change the temperature, press the "↑" (upward arrow) or "↓" (downward arrow) button until you get the required temperature. When setting the temperature, the figures on the display blink quickly. After you get the temperature required, it is saved in the memory of the Goldpress and the machine returns to show the current heater temperature (as already mentioned, if the current temperature varies for more than +/- 3 C from set temperature, the figures on the display blink slowly). Set stamping time appears on the display when the arm of the machine is maximally put down. The counting down starts; after the set time passes an inscription END appears on the display. That means that the arm should be lifted.

Stamping time can be set between 0,5 and 10 seconds. To set the suitable time, put the arm maximally down. Then, pressing the "↑" (upward arrow) or "↓" (downward arrow) button set the required time. For a moment the figures on the display blink quickly and then an inscription END appears. That means that new settings have been saved in the memory.

## 8 COUNTER

The machine is equipped with a counter, which reckons how many imprintments have been made. The value of counter appears for 2 seconds after lifting the arm. If the arm was put down and then only the settings of stamping time were changed, the counter does not recognize it as an imprintment. The value of counter is deleted every time when switching off the machine.

## 9 PREPARING THE FONTS AND MATRIXES

With the Goldpress machine you can hot stamp inscriptions (with fonts) or logo, symbols, signs etc (with matrixes). Inscriptions can be made both on covers and, using the 0.Gold-channel Base, on channels (backs of OPUS covers).

**Note! When hot stamping on channels, use only 5,5mm; 6 mm or 9mm fonts.**

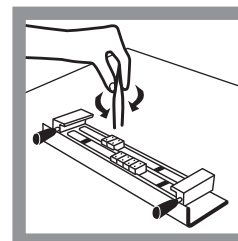
### A. PREPARING THE FONTS

1. Take the frame out of the heating slot and put it on a holder. This way you can comfortably put the fonts in and out of the frame.

**Note!**

**If the frame or the fonts were previously used or located in the heating slot during the heating period, wait 5÷10 min until they get cold. For that reason we recommend having several sets of fonts, frames and holders.**

2. Compose a required text by putting suitable fonts into the frame.



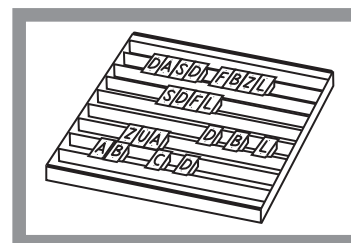
**Note!**

The types should be put in and taken out by means of a special pliers. The ends of the pliers should be inserted into the holes in the fonts (see the picture) or embrace the fonts (in case of 3,2 mm and 4mm size).

The holes enable to distinguish between the top and the bottom of a font. The bottom hole of a font is larger or located closer to the edge (3,2mm and 4 mm high fonts, because of their small measurements, have only one hole – at the bottom)

**If you prepare fonts to be hot stamped on the channels, use only 5,5 mm, 6mm or 9 mm ones. Using smaller fonts may result with their damage. When hot stamping on channels compose the text in 1L5,5 or 3L5,5 (middle line) frames – for 5,5mm fonts; 1L6 frame for 6mm fonts and 1L9 frame for 9mm one.**

3. Lock the text in the frame by means of the stops.
4. Insert the frame into the heating slot and wait about 3 min. until the fonts are hot.



**Note!**

To make storing and keeping fonts in order easier, we recommend using a movable container (see the picture). Storing the fonts in the container helps to find a required letter quickly and prevents from losing the fonts.

### B. PREPARING THE MATRIX

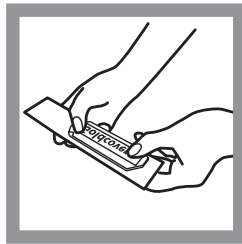
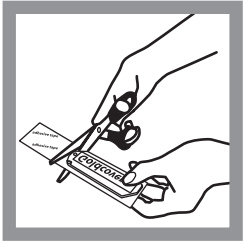
1. You can order a special, customized matrix (0.Matrix) from OPUS, made according to your own design. 0.Matrix is suitable for use with Goldpress machine. You can also use your own matrix, if its measurements do not exceed 35 mm x 179mm (1,37 in. x 7,04 in.). However, in this case you need to use also a special tape (0.Mounting Tape) and a plate (0.Matrix base) to mount it in Goldpress.

#### 0-MATRIX (customized matrixes ordered in Opus)

1. Put the 0.Matrix into a special frame (depending on the matrix size).
2. Insert the frame into the heating slot and wait until the matrix is hot.

#### CUSTOMER'S MATRIX

1. Stick the tape to the back of your matrix (by taking off the protection layer) and cut it along the matrix edge.
2. Stick the matrix to 0.Matrix Base



**Note!**  
Before sticking the matrix, make sure that the inscription/logo on the matrix is parallel to the bottom edge of the plate (0.Matrix Base)

3. Put the plate (0.Matrix Base) with the matrix into the frame (0.Matrix frame)

4. Insert the frame into the heating slot and wait until the matrix is hot.

**Note!**

The heating time of a matrix depends on its size and can vary from few to tens of minutes. Therefore it is necessary to conduct a test to check if the matrix is hot enough.

## 10 PREPARING THE DOCUMENT FOR HOT STAMPING

1. Center a cover with one of the side guides located on the base of device.
2. Determine the height of the inscription on a cover with the back guide.

**Note!**

The scale next to the side guides indicates the distance between right edge of the cover and the center of the frame with fonts (e.g. positioning the cover at 9 means that the center of the frame is placed 9cm away from the right side of the corner). The scale next to the back guide indicates the distance between upper edge of the cover and the center of the frame with fonts.

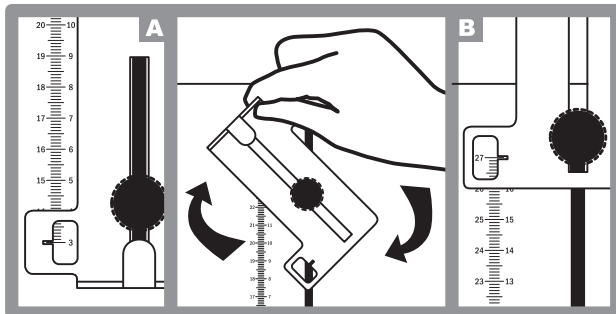
**Important!**

**A. For range 3 – 17 cm:**

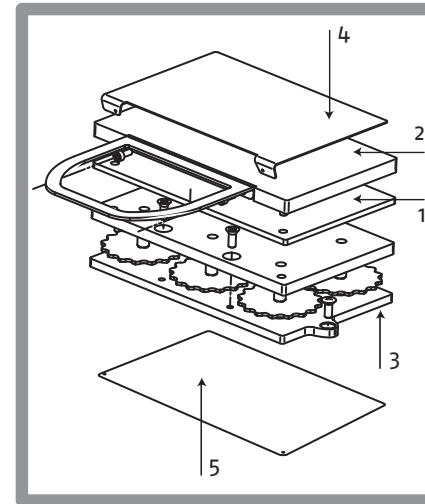
Set up the back guide to A position, choose on scale demanded value (marker in window 1) and move maximally to the bent side of the back guide.

**B. For range 13 – 27 cm:**

Turn the back guide for 180 degrees (B position), choose on scale demanded value (marker in window 2) and move maximally to the bent side of the back guide.



## 11 PREPARING THE PLATES



### A. ADJUSTMENT

1. Lower the basic plate (3) by turning all its knobs maximally counter-clockwise.
2. On the basic plate (3) put the plate #1 and then plate #2.

**Note!**

Plate #2 has pins, which should be placed into the holes of plate#1 and basic plate (3)

3. On the top put the adjusting plate (4); its bent wall should be placed down and should face you.
4. Put the arm of the machine down.
5. Keeping the arm down, turn the knobs of the basic plate (3) maximally clockwise
6. Lift the arm of the machine

**Note! Repeat steps 4, 5, 6 for several times.**

7. Take the adjusting plate (4) off.

**Note!**

The process of adjusting should assure the highest quality of hot stamping. However, it may happen to be necessary to increase the pressure on the cover (e.g. pale dots within the embossed area) or decrease the pressure (e.g. blurred letters). In such case:  
-turn the knobs of the basic plate (3) clockwise – to increase the pressure  
-turn the knobs of the basic plate (3) counter-clockwise – to decrease the pressure  
Also, if the inscription is not uniformly hot stamped (e.g. left side is hot stamped correctly, while right side is blurred), turn the adequate knobs clockwise or counter-clockwise (to increase/decrease the pressure on the adequate side of the basic plate (3)).

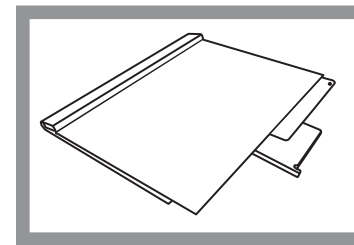
**Note!**

Adjustment does not have to be conducted every time when changing the fonts or type of cover. It should be repeated only after the hot stamping result is not satisfactory.

### B. ARRANGING THE PLATES DEPENDING ON THE TYPE OF COVER

**Metalbind cover (set of two separated covers and a channel):**

1. On the basic plate (3), put the plate #1 and plate#2
2. Put the cover to be hot stamped on the plates.

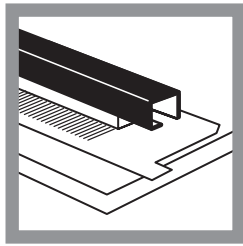


**C-bind cover (typical cover with a built-in channel):**

1. Put the basic plate (3) into the heating slot and a plate #2 on it.
2. Put the C-bind cover with its channel up.
3. Inside the cover, in the place where you are going to hot stamp, insert the CB layer (4)
4. Put the cover (with the CB layer in) on the plates

**12 PREPARING THE CHANNEL FOR HOT STAMPING**

With the machine **ONLY** the **0-CHANNELS** manufactured by **OPUS** can be hot stamped. To hot stamp on channels you need to use 0.GoldChannel Base



1. Fix the changeable part onto the channel base (pins of the base should fix into the holes in the changeable part). Make sure that the size of the changeable part (indicated in front) must be same as the size of the channel you want to hot stamp on.
2. Put the channel on the changeable part. If necessary, centre the channel using the scale stuck on the base
3. Put the basic plate (3) into the heating slot.
4. Insert the base and the channel under the heating slot.

**13 HOT STAMPING**

1. Put a cut off piece of foil in the place where you want to make hot stamps.
2. Insert the cover under the heating slot. Make sure that the foil strip is positioned exactly under the frame.
3. Press the arm of the machine maximally down until the counter starts to count down the time
4. After the set time passes (inscription END appears) lift the arm.

**Note!**  
 If the current heater temperature is too low – an inscription LO appears. It is necessary then wait the heater to get hot. If the current heater temperature is too high – an inscription HI appears. You need to wait until the heater cools down.

5. Take the cover (channel) out and remove the foil strip. To change an inscription or a matrix, remove the frame from the heating slot (note: the frame is hot), put it away on the holder, wait 5÷10 minutes until the frame is cold and, subsequently, start composing a new text or mounting a new matrix.

**Note! After hot stamping is done, we recommend to wipe the hot stamped inscription with a soft cloth (in order to get rid of the remainings of hot stamping foil).**

**14 MAINTENANCE**

The machine needs neither lubrication nor periodical surveys. The points to be lubricated have been preserved in the factory. The machine housing is coated with powder varnish. The machine can be cleaned with detergents commonly available in the market. Do not use any solvents!

DEFECT	POSSIBLE CAUSE	REMEDY
The machine does not switch on	Temperature of the room is lower than +8 C/46,4 F	Place the machine in a room temperature higher than +8C/46,4 F
The display does not indicate a temperature	The plug is not connected to mains	Insert the plug to mains socket
	Lack of voltage in a socket	Connect the machine to another socket
	The device is damaged	Contact the supplier
The device does not achieve a desired temperature or exceeds it significantly.	Check what temperature has been set	Set a suitable temperature
	The device is damaged	Contact the supplier
Pale dots appear within hot stamped inscription	Too low temperature	Increase temperature
	Too short time of stamping	Increase stamping time
	Too low pressure	Increase the pressure (turn clockwise the knobs of the basic plate (3))
Stamped letters are blurred, traces of paint are visible beyond letter edges	Too high temperature	Reduce temperature
	Too long time of stamping	Reduce stamping time
	Too high pressure	Lower the pressure (turn counter-clockwise the knobs of the basic plate (3))

**15 TECHNICAL DATA**

- Rated voltage .....230V 50 Hz
- Max power consumption .....500W
- Rated power consumption .....80W
- Dimensions DxSxW (in.) .....546x362x278
- Operating temperature .....~100°C
- Temperature adjustment range.....50–150°C
- Temperature stabilization .....microprocessor
- Maximumcover width (with the side stop) .....265mm
- Maximumcover width (without the side stop) .....305mm

**TECHNICAL DATA (NORTH AMERICA)**

- Rated voltage .....110–120V 50–60 Hz
- Max power consumption .....250W
- Rated power consumption .....50W
- Dimensions DxSxW (in.) .....21,5x14,2x10,9
- Operating temperature .....~212F
- Temperature adjustment range .....122÷302F
- Temperature stabilization .....microprocessor
- Maximumcover width (with the side stop) .....10,4 in
- Maximumcover width (without the side stop) .....12 in